

*Vilas Alvas - Loulé*

# PLOT IN PRIVATE DEVELOPMENT



Mapro Sociedade Mediação Imobiliária Lda.

Edifício Mapro • Av. Alm. Mendes Cabeçadas • 8135-106 Almancil • Algarve, Portugal

+351 289 390 880 • [info@maprorealestate.com](mailto:info@maprorealestate.com)

[www.maprorealestate.com](http://www.maprorealestate.com)

**MAPRO**  
REAL ESTATE • IMOBILIÁRIA

**Knight  
Frank**



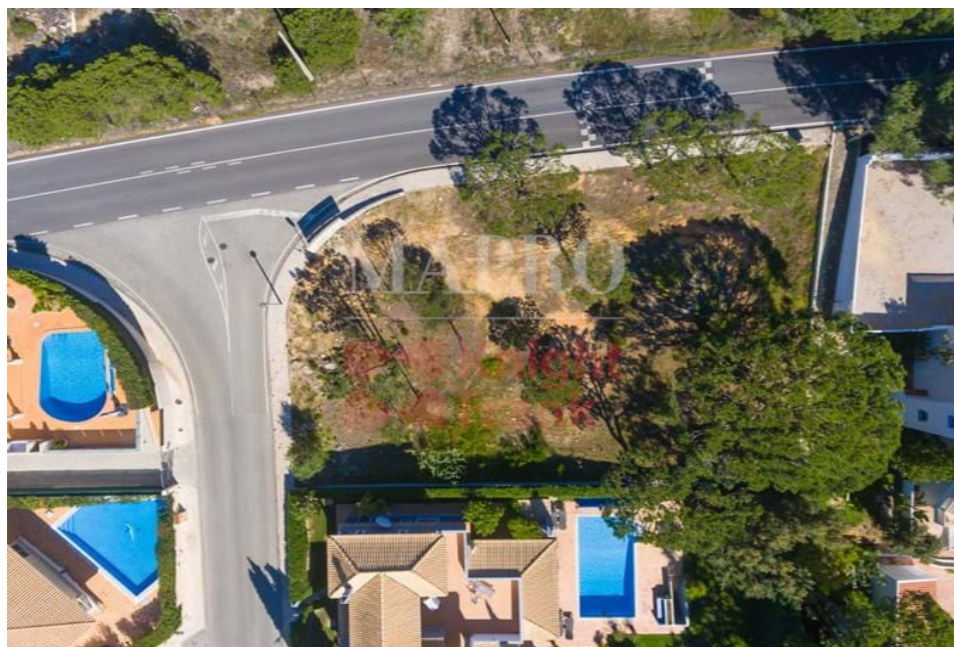


## PLOT IN PRIVATE DEVELOPMENT

A plot for construction is located within an exclusive private development, just a short drive from the beach and the area's renowned golf courses.

This plot provides an exceptional opportunity to build a home with a construction allowance of 35% of the plot size above ground, complemented by a basement area of approximately 220m<sup>2</sup>.

Create your dream home, customising it to your preferred finishes and style, and leave your mark in the heart of the Golden Triangle.







1 875 000 €

PRICE

REF 1398

FACTS & FEATURES



300 sqm



1055 sqm



-



-

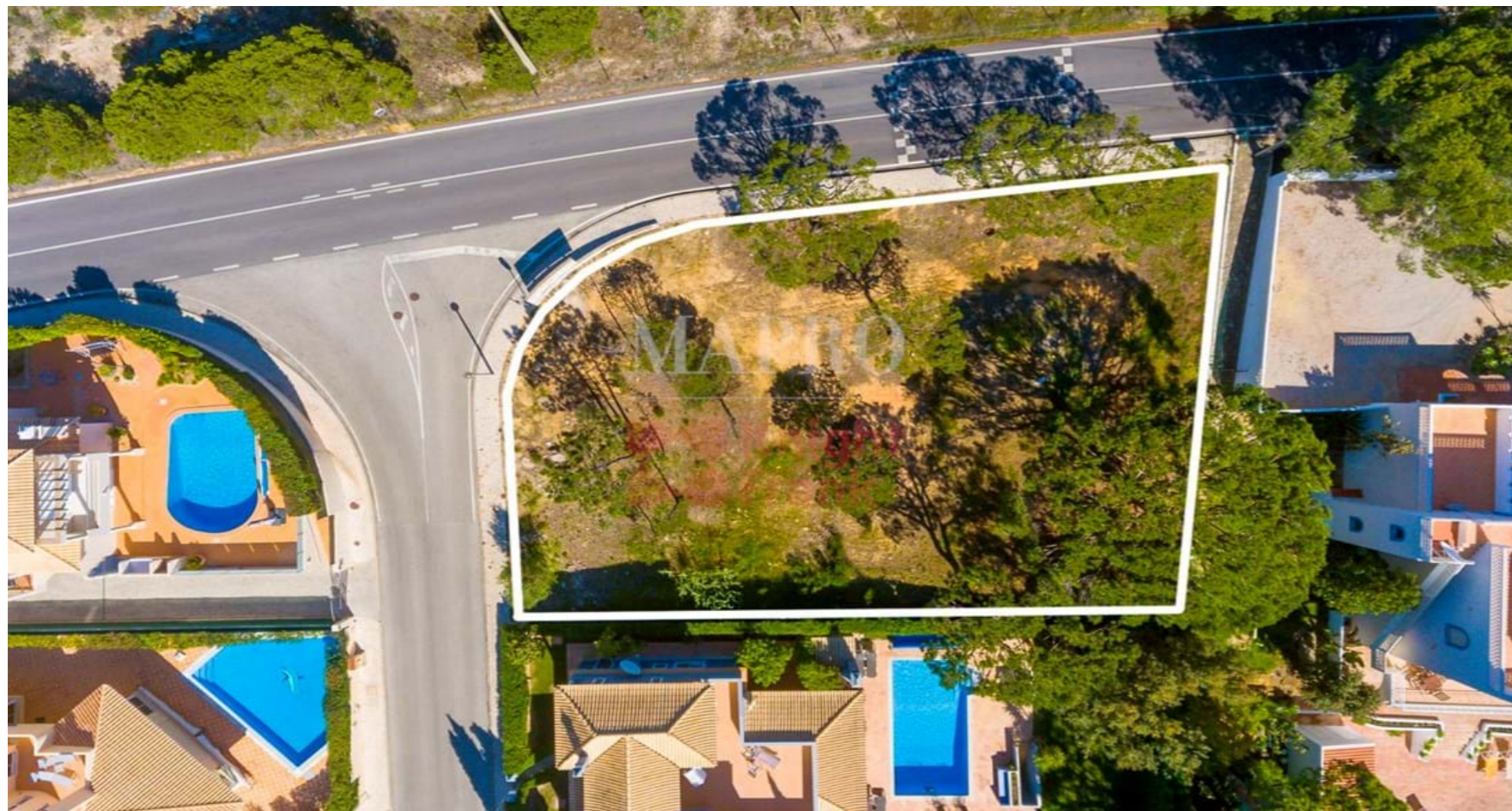
Ownership Private

Views Garden

Beach 2Km

Golf 2Km

Airport 15Km



IMPORTANT NOTICE: These details are guidelines only. They do not form part of any contract and may change at any time without prior notice.



